



Horus

Wireless Facial Recognition Time Attendance Terminal

The trend of Visible Light Facial Recognition technology have brought user experience of biometric technology to a new height. As one of the biometric industry leaders, ZKTeco launched the second-generation facial recognition terminal—Horus series, named after an Egyptian god, who has the legendary “all-seeing eye” that can clearly observe everything. Horus is one of the most advanced Access Control & time and attendance terminal existing in the market, with incredibly compact size (almost the same size as iPhone XS max) and powerful facial recognition technology offering up to 3 meters recognition distance, ± 30 degree pose angle tolerance, high anti-spoof ability, support on plentiful communication protocols (Wi-Fi, 3G, 4G, Bluetooth) and worldwide network setting, optional fingerprint and RFID card modules, up to 10,000 facial templates capacity, and is compatible with the all-in-one security & time attendance platform ZKBioSecurity and BioTime.

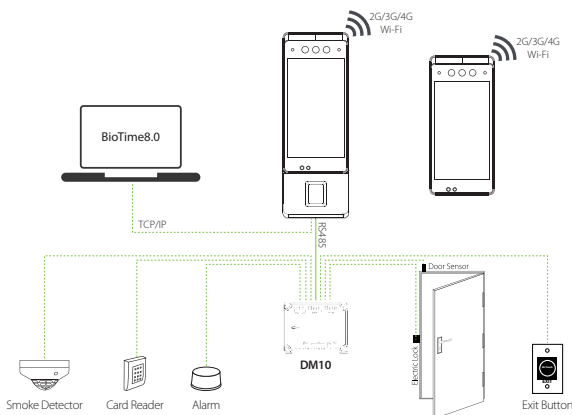
Features

- New height of facial recognition template capacity up to 1: N-10,000 facial templates.
- Anti-spoofing algorithm against print attack (laser, color and B / W photos), videos attack, and 3D mask attack.
- Supports multiple communication protocols: 4G, Wi-Fi, Bluetooth and USB.
- 5-inch smartphone grade IPS touch LCD monitor
- Extensive Fingerprint, RFID, access control (DM10) and TCP / IP communication modules available.
- Extra-large 2MP CMOS with WDR function
- Various further development options: embedded GPS / A-GPS, microphone and PIR sensor

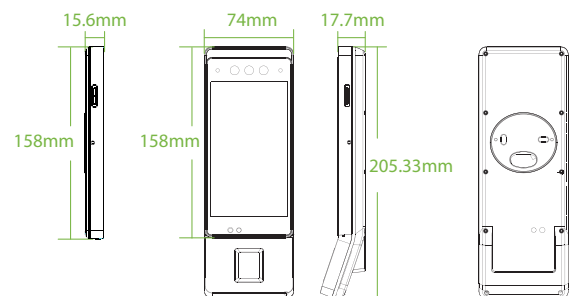
Specifications

| | Horus E1 | Horus E1-RFID | Horus E1-FP |
|------------------------------|--|---|---|
| Picture |  |  |  |
| CPU | Quad-core, 1.5GHz | | |
| Android Version | Android 8.1 | | |
| Memory | RAM 2GB / ROM 16GB | | |
| Camera | 2MP Dual Camera | | |
| LCD | 720*1280, IPS touch LCD | | |
| Verification Mode | Face | Face + RFID | Face + Fingerprint + RFID |
| Face Capacity | 6,000 / 10,000 (optional) | | |
| Fingerprint Capacity | N / A | N / A | 6,000 / 10,000 (Optional) |
| ID Card | N / A | MF & Desfire Optional | |
| Access Control (DM10 Module) | N / A | Optional | |
| TCP/IP | N / A | 10 / 100 Mbps | |
| Wi-Fi | 2.4GHz, 5GHz, 802.11a / b / g / n | | |
| Bluetooth | 4.0 | | |
| 4G Wireless Broadband | GSM: 850 / 900 / 1800 / 1900 WCDMA: 850 / 900 / 1700 / 1900 / 2100 TDD-LTE: B38 / B40 / B41M FDD-LTE: B1 / B2 / B3 / B4 / B5 / B7 / B8 / B12 / B17 / B20 / B28A / B28B' | | |
| USB | USB 2.0 (upto 16G USB Disk) | N / A | |
| GPS | GPS / A-GPS | | |
| Speaker | 90DB (10cm distance) | | |
| Microphone | 1m clear voice pickup | | |
| Dimensions | 158 * 74 * 15.6mm | 205.33 * 74 * 17.7 mm | |
| Power | 12V 2A | | |
| Operating Temperature | -10°C — 50°C | | |
| Operating Humidity | 20% — 80%RH | | |
| Certifications | CE, FCC, RoHS | | |

Configuration



Dimensions (mm)



MySolutions Inc.

Authorized Distributor of ZKTeco Products in the Philippines
 2F 201 Del Monte Ave. Brgy. Masambong QC
 Tel: (02) 8-365-8488 | (02) 8-367-8188
 (02) 8-257-7696 to 99
 Email: sales@mysolutions.ph

V1.0 2020.03.12



Copyright©2020 ZKTECO CO., LTD. All rights reserved.