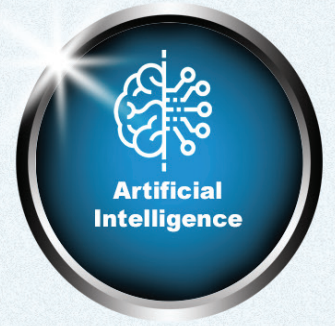


**HST**<sup>®</sup>

HLOGIC SECURITY TECHNOLOGY



**2024**

**Metal Detector 11 zone**

[www.hlogicgroup.com](http://www.hlogicgroup.com)

# HST270SA - 11 Series

## Side Panel Digital Control Box



WATERPROOF



ACCESS CONTROL  
CONNECTING



LED LIGHT  
INDICATOR



MODULAR  
DESIGN



PASSWORD  
PROTECTION



VOLUME  
ADJUSTABLE



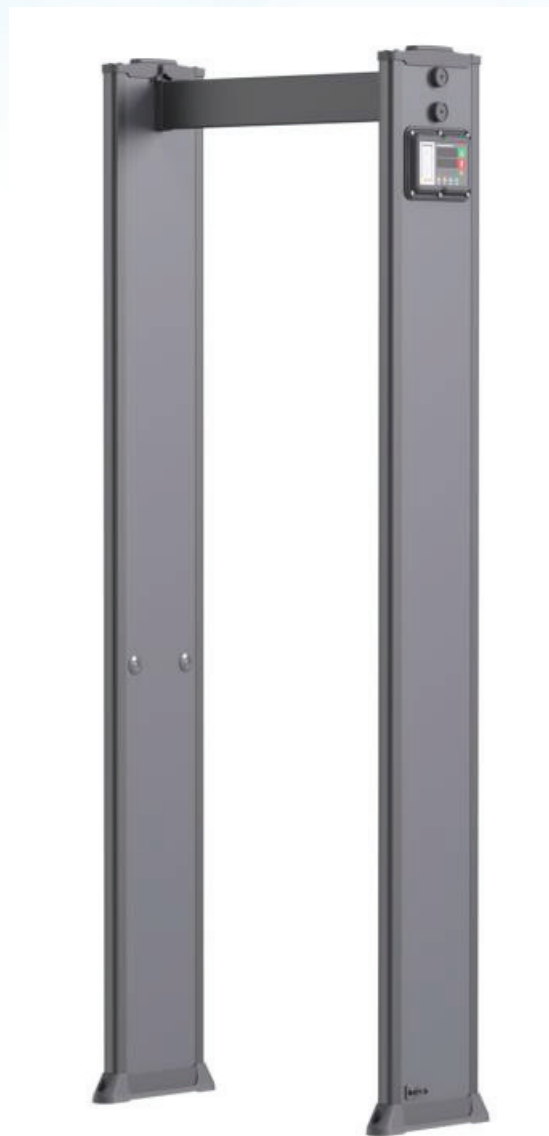
HIGH  
PRECISION



LED DISPLAY



SENSITIVITY  
ADJUSTABLE

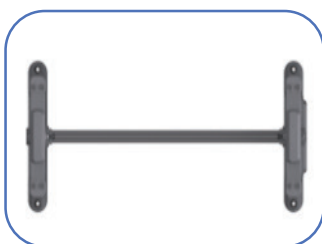


- Compact panel, lightweight design;
- Perfect for space -constrained environments;
- Quick installation, easy operation control unit;
- High security level up to vertical 11 zones ;
- Optional integration with turnstiles;

Conform to Electricity EN60950 Safety Standard

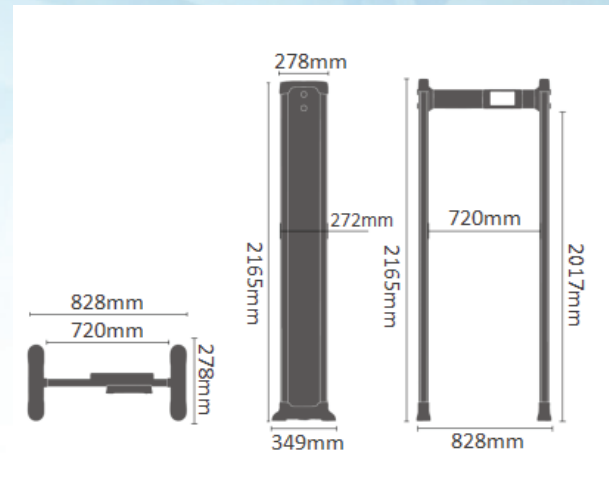
Conform to Radiation EN50081 -1 Standard

Conform to Anti -interference EN50082 -1 Standard



## Product Specification

Overall Exterior Size	2165*828*349mm
Passageway Interior Size	2017*720*349mm
Operating Voltage	AC100V ~240V 50 / 60Hz
Power	12W
Operating Temperatures	-20 ~ 65
Installation Environment	Width 100cm* Length 200cm (minimum range without metal)



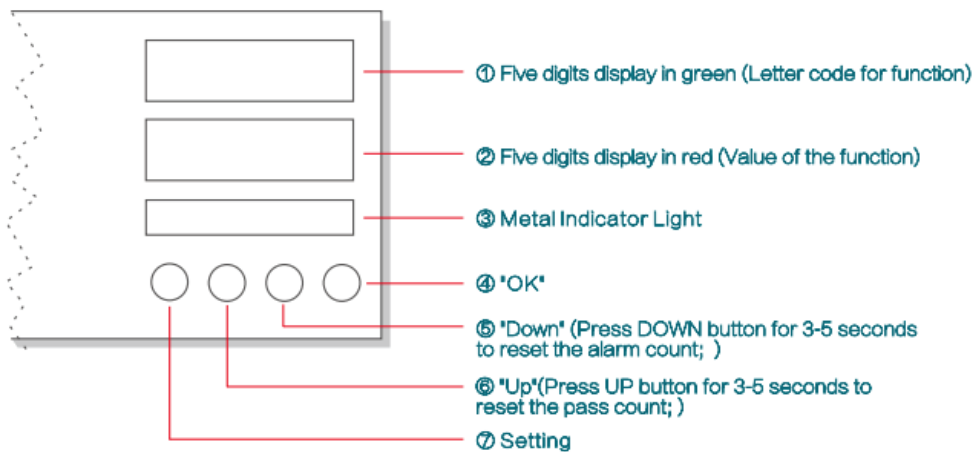
## Function Configuration

Detection Zones	11 Vertical Zones
Pass Count	0-99999
Alarm Count	0-99999
Metal Detection Accuracy Range	One - dollar coin
User Interface	Dual sets of bright red and green digital tube display + integrated four -button panel operation mode
Password Protection Function	5-digit password protection
Operating Frequency	0-99
Security Level	0-99
Sensitivity Level	0-400
Alarm Volume	0-99
Alarm Tone	1-99
Alarm Time	1-99
Scene Setting	72 preset scenes
Infrared Setting	0-Both groups OFF 1-Front group ON 2-Rear group ON 3-Both groups ON
Left and right LED Bars	Interchangeable
LED Alarm Bars	Front 2 groups
Simultaneous detection and alarm in multiple zones	2 Detection zones simultaneously alarm

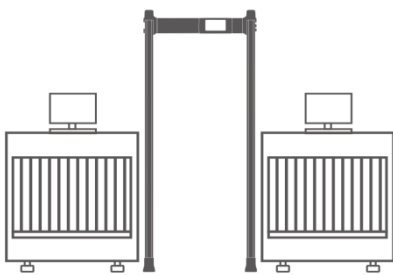
## Optional Functions: The above zones can be equipped with the following functions

- Secondary Development Port/Upgrade Port
- Front and Rear Panel Alarm LED Lights
- Turnstile Connection

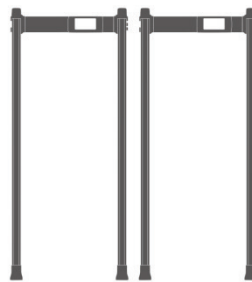
## Interface Display



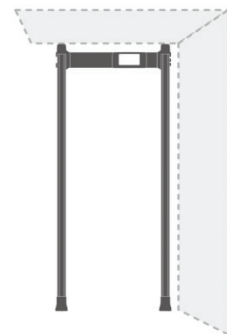
## Anti - interference Reference Standard



Keep  $\geq 80\text{cm}$  from the X -Ray machine



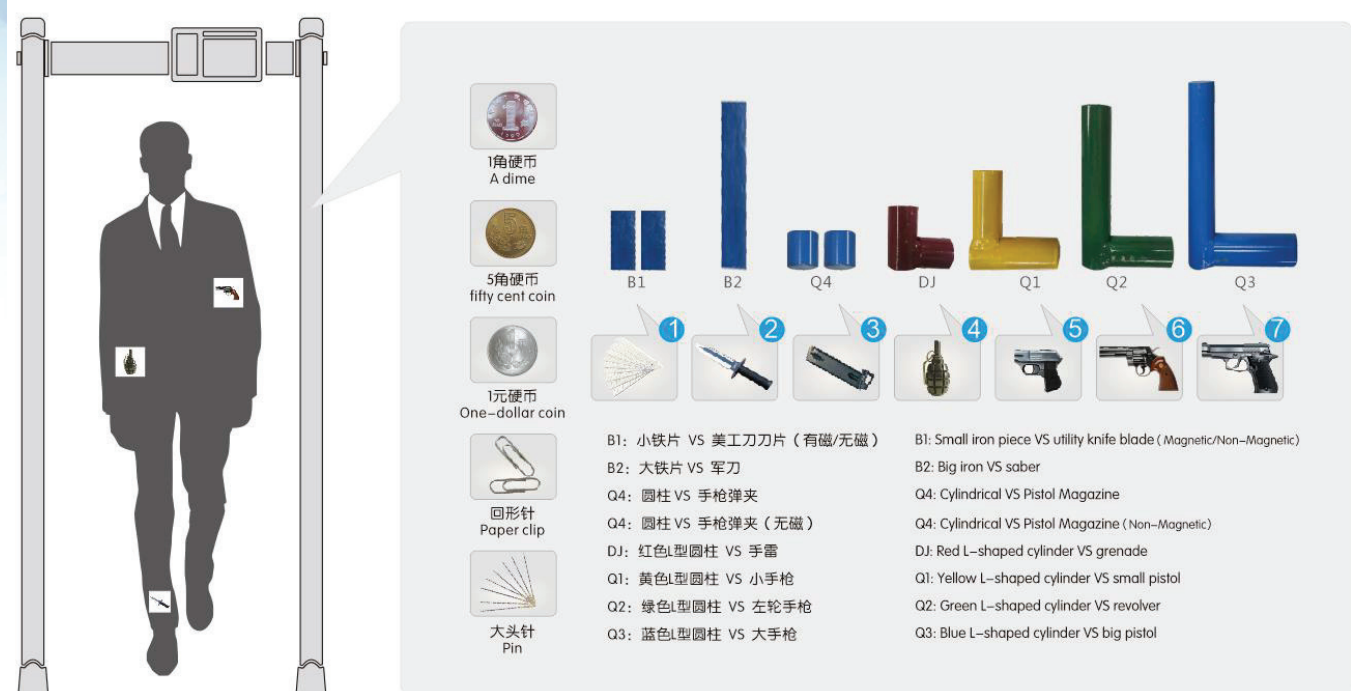
Keep  $\geq 50\text{cm}$  between two units



Keep  $\geq 10\text{cm}$  from the wall

Note: The above distances are for reference only, and the actual distances shall be subject to the performance accuracy of on -site debugging; the higher the sensitivity, the greater the distance interval, and the lower the sensitivity, the smaller the distance interval.

## Test kits



The diagram shows a person walking through a metal detector. A callout box lists various test kit items and their corresponding detector responses:

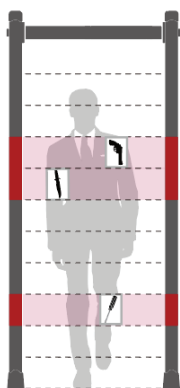
- 1角硬币 A dime
- 5角硬币 fifty cent coin
- 1元硬币 One-dollar coin
- 回形针 Paper clip
- 大头针 Pin

The callout box also displays various test objects labeled B1, B2, Q4, DJ, Q1, Q2, Q3, and numbered 1 through 7, each with a corresponding image of the object.

Legend for test objects:

- B1: 小铁片 VS 美工刀刀片 (有磁/无磁) / B1: Small iron piece VS utility knife blade (Magnetic/Non-Magnetic)
- B2: 大铁片 VS 军刀 / B2: Big iron VS saber
- Q4: 圆柱 VS 手枪弹夹 (无磁) / Q4: Cylindrical VS Pistol Magazine (Non-Magnetic)
- DJ: 红色L型圆柱 VS 手雷 / DJ: Red L-shaped cylinder VS grenade
- Q1: 黄色L型圆柱 VS 小手枪 / Q1: Yellow L-shaped cylinder VS small pistol
- Q2: 绿色L型圆柱 VS 左轮手枪 / Q2: Green L-shaped cylinder VS revolver
- Q3: 蓝色L型圆柱 VS 大手枪 / Q3: Blue L-shaped cylinder VS big pistol

## Detection Zone



11 zones

## Package

Packaging :	Carton box
Package Size :	L2245xW635xH200mm
Volume :	0.29m <sup>3</sup>
Net weight :	24kg
Gross weight :	30kg



The logo for HST, featuring the letters 'HST' in a bold, blue, sans-serif font. The 'H' and 'S' are connected, and the 'T' is slightly separated. A registered trademark symbol (®) is located to the upper right of the 'T'.

# HST<sup>®</sup>

MORE THAN SECURITY



[www.hlogicgroup.com](http://www.hlogicgroup.com) 🔍